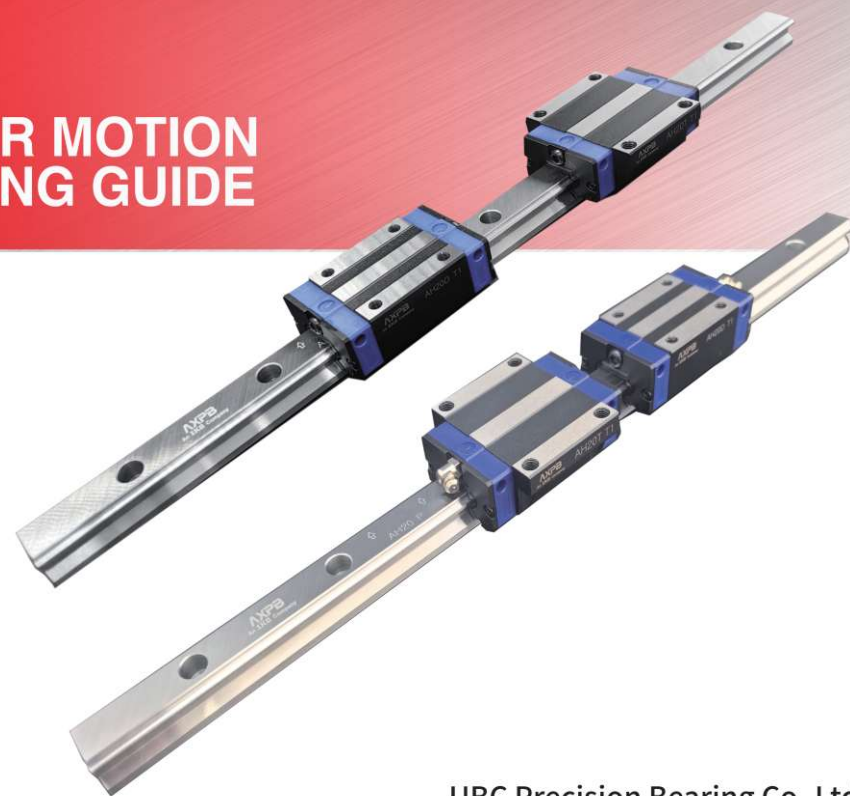


AXPB
An **IKO** Company

LINEAR MOTION ROLLING GUIDE



2D/3D technical drawings
are available for download
through below link or by
scanning this QR code.
<https://axpb.partcommunity.com/3d-cad-models>

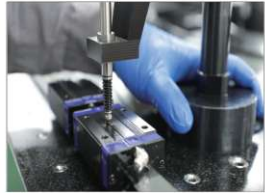
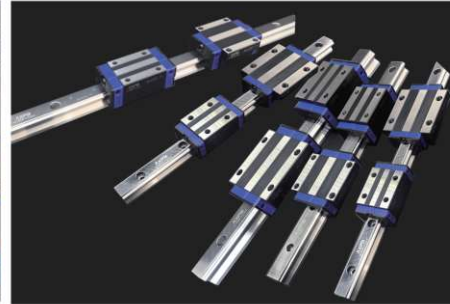


www.ubc-bearing.com
Check out our website

An **IKO** Company
UBC Precision Bearing Co., Ltd.

Suite 1703, Zhongrong Plaza, 1088 South Pudong Road,
Pudong New District, Shanghai, 200120, P.R. China
Tel.: +86-21-64904536
Fax: +86-21-68781355
Email: market@ubc-bearing.com

UBC Precision Bearing Co.,Ltd.
www.ubc-bearing.com



Typical applications of AXPB Linear Motion Rolling Guides

01

CNC - Drilling and Tapping Machine

AH 25
AH 30
AH 35



02

CNC - Precision Carving Machine

AH 25
AH 30
AH 35



03

Automation - Robot Arm

AE 15
AE 20
AE 25



04

Tyre Building Machine

AE 15
AE 25
AH 35
AH 45



05

Packaging Machine

AH 30
AH 35
AE 20
AE 25



06

Laser Machine

AE 15
AE 20
AH 20
AH 25



AXPB Linear Motion Rolling Guide Product Series

AH Types & Sizes

Table 1 Assembly Types

		Flange		Square
		Mounting from bottom	Mounting from top	Mounting from Top
Carbon steel	Standard	AH	AH···T	AH···D
	Longer length	AH···G	AH···TG	AH···DG

Table 2 Sizes available

Series	15	20	25	30	35	45
AH	○	○	○	○	○	○
AH···G	—	○	○	○	○	○
AH···T	○	○	○	○	○	○
AH···TG	—	○	○	○	○	○
AH···D	○	○	○	○	○	○
AH···DG	—	○	○	○	○	○

AE Types & Sizes

Table 1 Assembly Types

		Square	
		Mounting from Top	
Carbon steel	Shorter length	AE···SK	
	Standard	AE···S	

Table 2 Sizes available

Series	15	20	25
AE···SK	○	○	—
AE···S	○	○	○

Table 1 Suffixes for special requests

Special requests	Suffix code
Number of splicing linear rails	AO
Rail mounting from bottom	E4
Dust cap for the mounting holes in the rail	F
Inspection report for finished product	I
Both rail and sliders are coated with black chrome film	MB
Slider coated with black chrome film	MBC
Rail coated with black chrome film	MBT
Double rubber seals	V
Number of paralleled rails	WO
Metal scraper	Z
Individual packing needed for sliders	B02

Rail Mounting from Bottom (Suffix code: E4)

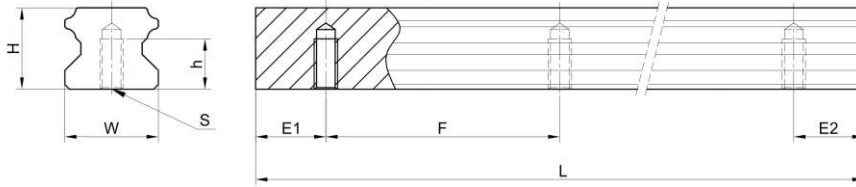


Table 2

Types & Sizes	Dimensions (mm)					Weight (Kg/m)
	W	h	H	S	F	
AH15	15	8	15	M5×0.8P	60	1.48
AH20	20	10	17.5	M6×1P	60	2.29
AH25	23	12	22	M6×1P	60	3.35
AH30	28	15	26	M8×1.25P	80	4.67
AH35	34	17	29	M8×1.25P	80	6.51
AE15	15	7	12.5	M5×0.8P	60	1.26
AE20	20	9	15.5	M6×1P	60	2.15
AE25	23	10	18	M6×1P	60	2.79

Accuracy classes Normal: C High: H Precision: P Super Precision: SP

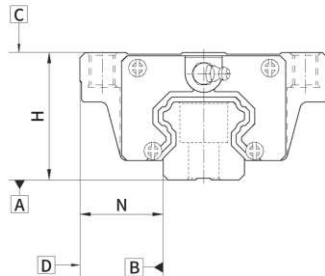


Table 1 Dimensional tolerance range and deviation of Assembled linear rails with sliders (for size 15, 20)

Description	Accuracy class		
	Normal (C)	High (H)	Precision (P)
Dimensional tolerance range of H	±0.100	±0.030	0 -0.030
Dimensional tolerance range of N	±0.100	±0.030	0 -0.030
Deviation of H (Remark 1)	0.020	0.010	0.006
Deviation of N (Remark 1)	0.020	0.010	0.006
The movement parallelism of C side, with A as the reference surface	See Figure 1		
The movement parallelism of D side, with B as the reference surface	See Figure 1		

Remark(1): Deviation of the dimensions of sliders on the same rail.

Table 2 Dimensional tolerance range and deviation of Assembled linear rails with sliders (for size 25, 30, 35)

Description	Accuracy class		
	Normal (C)	High (H)	Precision (P)
Dimensional tolerance range of H	±0.100	±0.040	0 -0.040
Dimensional tolerance range of N	±0.100	±0.040	0 -0.040
Deviation of H (Remark 1)	0.020	0.015	0.007
Deviation of N (Remark 1)	0.030	0.015	0.007
The movement parallelism of C side, with A as the reference surface	See Figure 1		
The movement parallelism of D side, with B as the reference surface	See Figure 1		

Remark(1): Deviation of the dimensions of sliders on the same rail.

Table 3 Dimensional tolerance range and deviation of Assembled linear rails with sliders (for size 45)

Description	Accuracy class		
	Normal (C)	High (H)	Precision (P)
Dimensional tolerance range of H	±0.100	±0.050	0 -0.050
Dimensional tolerance range of N	±0.100	±0.050	0 -0.050
Deviation of H (Remark 1)	0.030	0.015	0.007
Deviation of N (Remark 1)	0.030	0.020	0.010
The movement parallelism of C side, with A as the reference surface	See Figure 1		
The movement parallelism of D side, with B as the reference surface	See Figure 1		

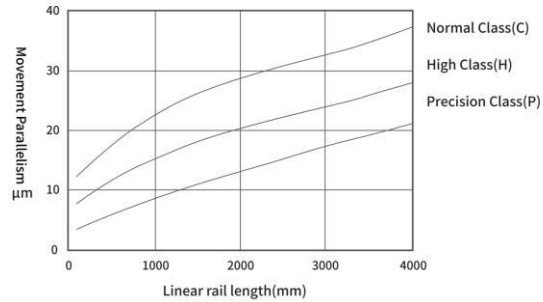
Remark(1): Deviation of the dimensions of sliders on the same rail.

Table 4 Dimensional tolerance range and deviation of Non-assembled interchangeable linear motion rolling guides (Accuracy class: Normal class (C))

Description	Size		
	15, 20	25, 30, 35	45
Dimensional tolerance range of H	±0.100	±0.100	±0.100
Dimensional tolerance range of N	±0.100	±0.100	±0.100
Deviation of H (Remark 1)	0.020	0.020	0.030
Deviation of N (Remark 1)	0.020	0.030	0.030
The movement parallelism of C side, with A as the reference surface	See Figure 1		
The movement parallelism of D side, with B as the reference surface	See Figure 1		

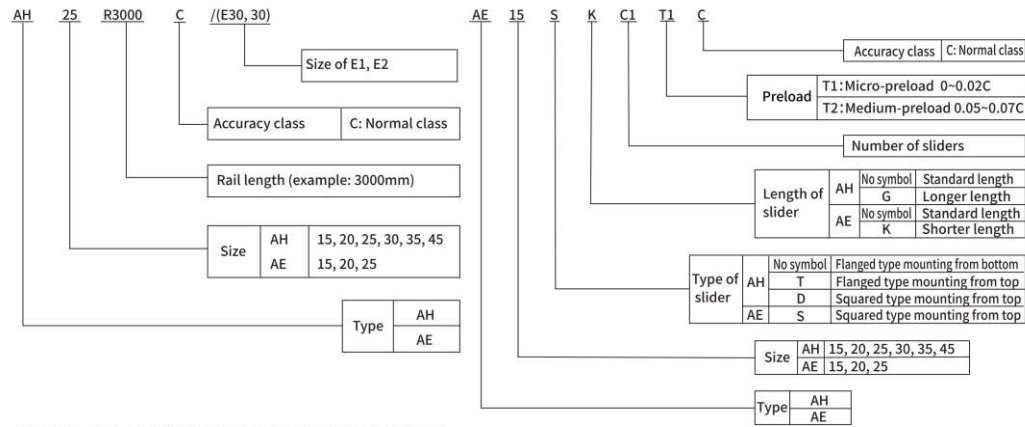
Remark(1): Deviation of the dimensions of sliders on the same rail.

Figure 1 Movement Parallelism

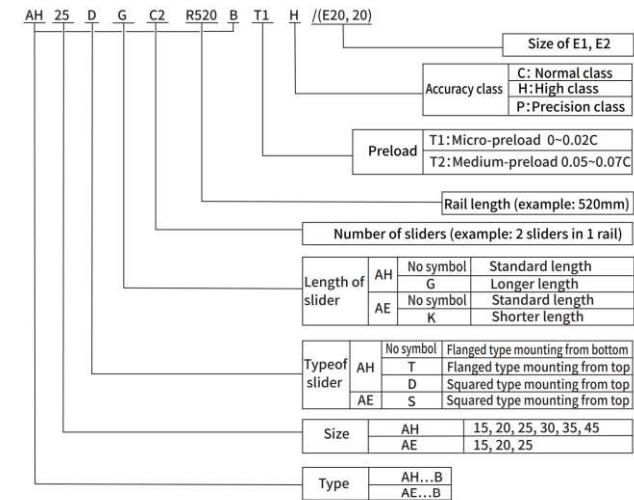


Specification of Part No.

Interchangeable linear rail

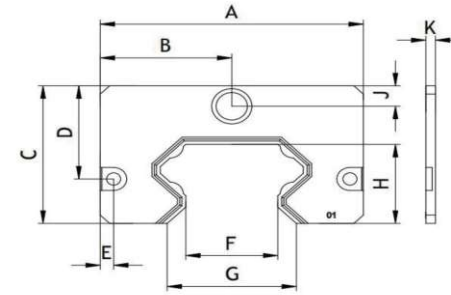


Non-interchangeable Assembled linear rails with slider(s)



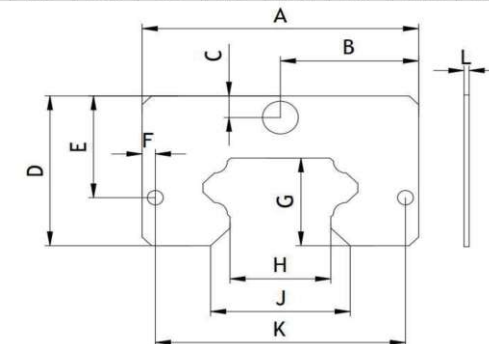
AXPB End Seal Basic Dimensions

No.	Type & Size	Dimensions (mm)									
		A	B	C	D	E	F	G	H	J	K
1	AH15	32.4	16.2	19	11.57	4.8	9.47	13.5	10.74	3.43	2.5
2	AH20	43.1	21.55	24.3	14.83	2.55	13.12	18.9	13.02	4.78	2.5
3	AH25	46.8	23.4	29.3	16.78	5.4	15.72	22.9	16.5	4.78	2.5
4	AH30	58.4	29.2	35	32.22	5.35	18.43	26.8	20	5.42	3
5	AH35	68.4	34.2	38.9	35.13	14.2	23.58	33.18	21.5	7.44	3
6	AH45	82.4	42.2	49.2	33.3	4.2	28.82	40.49	28.25	7.31	3
7	AE15	33.5	16.75	18.7	13.18	2.15	10.9	11.13	7.89	4.78	2
8	AE20	41.5	20.75	20.9	14.17	2.13	14.88	17.78	9.46	4.9	2
9	AE25	47.5	23.75	24.9	17.91	2.2	16.5	18.75	10.92	6.95	2



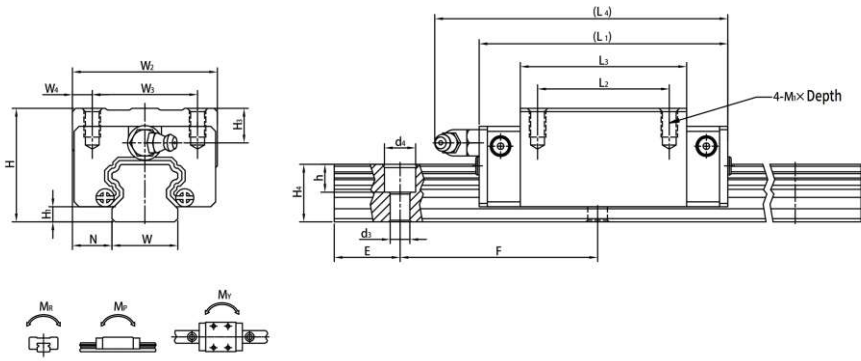
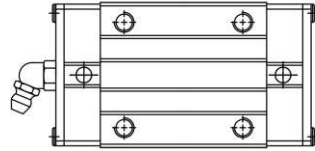
AXPB Metal Scraper Basic Dimensions

No.	Type & Size	Dimensions (mm)										
		A	B	C	D	E	F	G	H	J	K	L
1	AH15	31	15.5	3.33	18.8	11.5	4.1	11.14	10.47	16	22.8	1.5
2	AH20	42.5	21.25	4.63	24	14.68	2.25	13.37	14.12	20.02	38	1.5
3	AH25	46.2	23.1	4.18	28.1	16.18	5.1	16.4	16.72	24.6	36	1.5
4	AH30	57.8	28.9	5.12	34.4	31.92	5.05	20.2	19.43	27.62	47.7	1.5
5	AH35	67.8	33.9	7.14	38.3	34.83	13.9	21.7	24.58	33.85	40	1.5
6	AH45	81.8	40.9	7	48.6	33	3.9	28.45	29.82	41.3	74	1.5
7	AE15	32.9	16.45	4.48	18.1	12.9	1.87	8.09	11.9	12.3	29.17	1.5
8	AE20	40.9	20.45	4.6	20.3	13.87	1.83	9.66	15.88	18.59	37.25	1.5
9	AE25	46.9	23.45	6.65	24.3	17.61	1.95	11.12	17.5	19.56	43	1.5



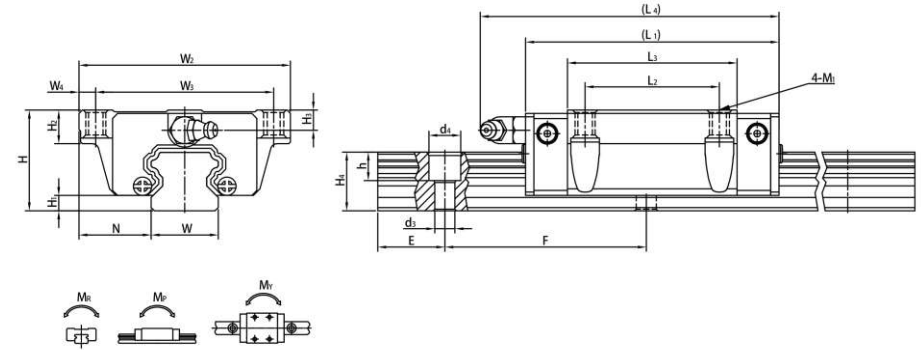
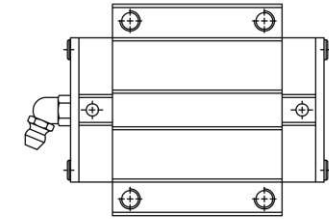
Dimensions – AH Series

AH-D/AH-DG



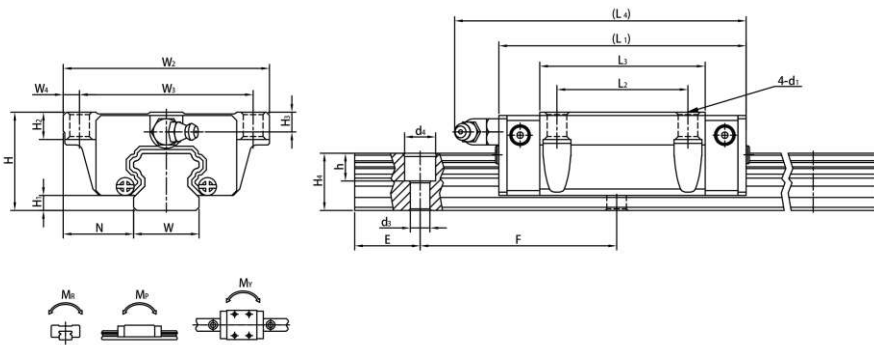
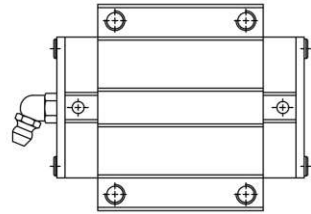
Part No.	Dimensions of assembly (mm)				Dimensions of slider (mm)				Dimensions of rail (mm)							Mounting bolt for rail (mm)	Basic dynamic load ratings		Basic static load ratings			Static moment rating			Weight (Ref.)		
	H	H ₁	N	W ₂	W ₃	W ₄	L ₁	L ₂	L ₃	L ₄	M ₁	Depth	H ₃	W	H ₄		d ₃	d ₄	h	F	C (kN)	C ₀ (kN)	M _R (kN·m)	M _P (kN·m)	M _V (kN·m)	Slider (kg)	Rail (kg/m)
AH 15D	28	4.3	9.5	34	26	4	61.4	26	39.4	(66.7)	M4	5	7.95	15	15	4.5	7.5	5.3	60	M4×16	14.70	23.47	0.12	0.10	0.10	0.18	1.45
AH 20D	30	4.6	12	44	32	6	77.5	36	50.5	(89.5)	M5	6	6	20	17.5	6	9.5	8.5	60	M5×16	27.10	36.68	0.27	0.20	0.20	0.30	2.21
AH 20DG							92.2	50	65.2	(104.2)											32.70	47.96	0.35	0.35	0.35	0.39	
AH 25D	40	5.5	12.5	48	35	6.5	84	35	58	(96)	M6	8	10	23	22	7	11	9	60	M6×20	34.90	52.82	0.42	0.33	0.33	0.51	3.21
AH 25DG							104.6	50	78.6	(116.6)											42.20	69.07	0.56	0.57	0.57	0.69	
AH 30D	45	6	16	60	40	10	97.4	40	70	(109.4)	M8	10	9.5	28	26	9	14	12	80	M8×25	48.50	71.87	0.66	0.53	0.53	0.88	4.47
AH 30DG							120.4	60	93	(132.4)											58.60	93.99	0.88	0.92	0.92	1.16	
AH 35D	55	7.5	18	70	50	10	112.4	50	80	(124.4)	M8	12	16	34	29	9	14	12	80	M8×25	64.60	93.88	1.16	0.81	0.81	1.45	6.30
AH 35DG							138.2	72	105.8	(150.2)											77.90	122.77	1.54	1.40	1.40	1.92	
AH 45D	70	9.5	20.5	86	60	13	133.8	60	97	(152.3)	M10	17	16	45	38	14	20	17	105	M12×35	103.8	146.71	1.98	1.55	1.55	2.73	10.41
AH 45DG							165.6	80	128.8	(184.1)											125.3	191.85	2.63	2.68	2.68	3.61	

AH-T/AH-TG



Part No.	Dimensions of assembly (mm)				Dimensions of slider (mm)				Dimensions of rail (mm)							Mounting bolt for rail (mm)	Basic dynamic load ratings		Basic static load ratings			Static moment rating			Weight (Ref.)		
	H	H ₁	N	W ₂	W ₃	W ₄	L ₁	L ₂	L ₃	L ₄	M ₁	H ₂	H ₃	W	H ₄		d ₃	d ₄	h	F	C (kN)	C ₀ (kN)	M _R (kN·m)	M _P (kN·m)	M _V (kN·m)	Slider (kg)	Rail (kg/m)
AH 15T	24	4.3	16	47	38	4.5	61.4	30	39.4	(66.7)	M5	8.9	3.95	15	15	4.5	7.5	5.3	60	M4×16	14.70	23.47	0.12	0.10	0.10	0.17	1.45
AH 20T	30	4.6	21.5	63	53	5	77.5	50.5	(89.5)	M6	10	6	20	17.5	6	9.5	8.5	60	M5×16	27.10	36.68	0.27	0.20	0.20	0.40	2.21	
AH 20TG							92.2	65.2	(104.2)												32.70	47.96	0.35	0.35	0.35	0.52	
AH 25T	36	5.5	23.5	70	57	6.5	84	58	(96)	M8	14	6	23	22	7	11	9	60	M6×20	34.90	52.82	0.42	0.33	0.33	0.59	3.21	
AH 25TG							104.6	78.6	(116.6)												42.20	69.07	0.56	0.57	0.57	0.80	
AH 30T	42	6	31	90	72	9	97.4	70	(109.4)	M10	16	6.5	28	26	9	14	12	80	M8×25	48.50	71.87	0.66	0.53	0.53	1.09	4.47	
AH 30TG							120.4	93	(132.4)												58.60	93.99	0.88	0.92	0.92	1.44	
AH 35T	48	7.5	33	100	82	9	112.4	80	(124.4)	M10	18	9	34	29	9	14	12	80	M8×25	64.60	93.88	1.16	0.81	0.81	1.56	6.30	
AH 35TG							138.2	105.8	(150.2)												77.90	122.77	1.54	1.40	1.40	2.06	
AH 45T	60	9.5	37.5	120	100	10	133.8	97	(152.3)	M12	15.1	8.5	45	38	14	20	17	105	M12×35	103.8	146.71	1.98	1.55	1.55	2.79	10.41	
AH 45TG							165.6	128.8	(184.1)												125.3	191.85	2.63	2.68	2.68	3.69	

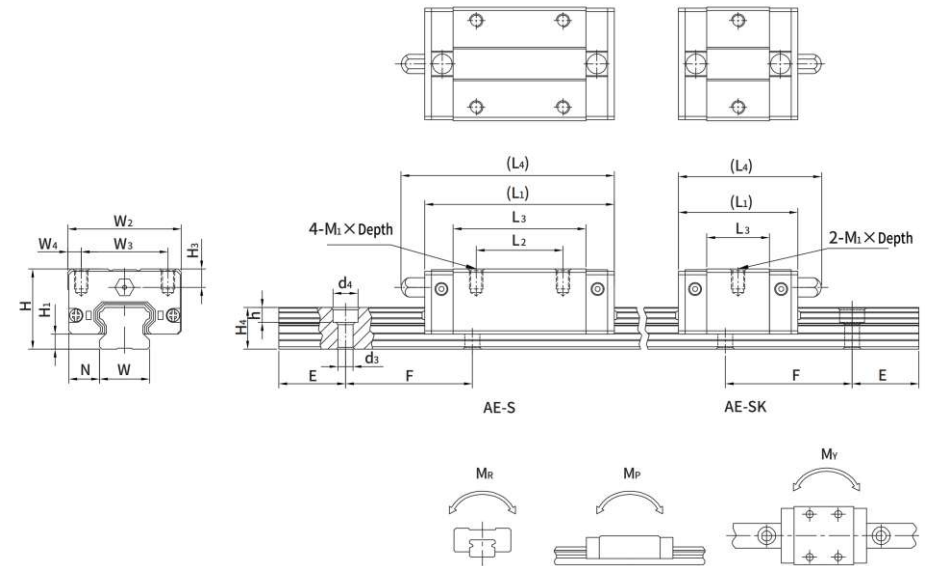
AH/AH-G



Part No.	Dimensions of assembly (mm)		Dimensions of slider (mm)						Dimensions of rail (mm)						Mounting bolt for rail (mm)	Basic dynamic load ratings C (kN)	Basic static load ratings Co (kN)	Static moment rating			Weight (Ref.)						
	H	H1	N	W2	W3	W4	L1	L2	L3	L4	H3	H2	d1	W				H4	d3	d4	h	F	MR	MP	MY	Slider (kg)	Rail (kg/m)
AH 15	24	4.3	16	47	38	4.5	61.4	30	39.4	(66.7)	3.95	6.95	4.5	15	15	4.5	7.5	5.3	60	M4×16	14.70	23.47	0.12	0.10	0.10	0.17	1.45
AH 20	30	4.6	21.5	63	53	5	77.5	40	50.5	(89.5)	6	9.5	6	20	17.5	6	9.5	8.5	60	M5×16	27.10	36.68	0.27	0.20	0.20	0.40	2.21
AH 20G	30	4.6	21.5	63	53	5	92.2	40	65.2	(104.2)	6	9.5	6	20	17.5	6	9.5	8.5	60	M5×16	32.70	47.96	0.35	0.35	0.35	0.52	2.21
AH 25	36	5.5	23.5	70	57	6.5	84	45	58	(96)	6	10	7	23	22	7	11	9	60	M6×20	34.90	52.82	0.42	0.33	0.33	0.59	3.21
AH 25G	36	5.5	23.5	70	57	6.5	104.6	45	78.6	(116.6)	6	10	7	23	22	7	11	9	60	M6×20	42.20	69.07	0.56	0.57	0.57	0.80	3.21
AH 30	42	6	31	90	72	9	97.4	52	70	(109.4)	6.5	10	9	28	26	9	14	12	80	M8×25	48.50	71.87	0.66	0.53	0.53	1.09	4.47
AH 30G	42	6	31	90	72	9	120.4	52	93	(132.4)	6.5	10	9	28	26	9	14	12	80	M8×25	58.60	93.99	0.88	0.92	0.92	1.44	4.47
AH 35	48	7.5	33	100	82	9	112.4	62	80	(124.4)	9	13	9	34	29	9	14	12	80	M8×25	64.60	93.88	1.16	0.81	0.81	1.56	6.30
AH 35G	48	7.5	33	100	82	9	138.2	62	105.8	(150.2)	9	13	9	34	29	9	14	12	80	M8×25	77.90	122.77	1.54	1.40	1.40	2.06	6.30
AH 45	60	9.5	37.5	120	100	10	133.8	80	97	(152.3)	8.5	15	11	45	38	14	20	17	105	M12×35	103.8	146.71	1.98	1.55	1.55	2.79	10.41
AH 45G	60	9.5	37.5	120	100	10	165.6	80	128.8	(184.1)	8.5	15	11	45	38	14	20	17	105	M12×35	125.3	191.85	2.63	2.68	2.68	3.69	10.41

Dimensions – AE Series

AE-S/AE-SK



Part No.	Dimensions of assembly (mm)		Dimensions of slider (mm)						Dimensions of rail (mm)						Mounting bolt for rail (mm)	Basic dynamic load ratings C (kN)	Basic static load ratings Co (kN)	Static moment rating			Weight (Ref.)						
	H	H1	N	W2	W3	W4	L1	L2	L3	L4	M1	Depth	H3	W				H4	d3	d4	h	F	MR	MP	MY	Slider (kg)	Rail (kg/m)
AE 15SK	24	4.5	9.5	34	26	4	40.1	—	23.1	(46)	M4	6	5.5	15	12.5	4.5	7.5	5.3	60	M4×16	5.35	9.40	0.08	0.04	0.04	0.09	1.25
AE 15S	24	4.5	9.5	34	26	4	56.8	26	39.8	(62.5)	M4	6	5.5	15	12.5	4.5	7.5	5.3	60	M4×16	7.83	16.19	0.13	0.10	0.10	0.15	1.25
AE 20SK	28	6	11	42	32	5	50	—	29	(55.7)	M5	7	6	20	15.5	6	9.5	8.5	60	M5×16	7.23	12.74	0.13	0.06	0.06	0.15	2.08
AE 20S	28	6	11	42	32	5	69.1	32	48.1	(81.1)	M5	7	6	20	15.5	6	9.5	8.5	60	M5×16	10.31	21.13	0.22	0.16	0.16	0.24	2.08
AE 25S	33	7	12.5	48	35	6.5	82.6	35	59	(94.6)	M6	9	8	18	7	11	9	9	60	M6×20	16.27	32.40	0.38	0.32	0.32	0.41	2.67